

## Controller Technical Specification

Mode Name	CT409U-1371
Type	Projected Capacitive
Version	V1.0
Date	2021-4-19

**Contents**

1. General Specifications..... 3  
2. Electrical specifications..... 4  
3. Mechanical specifications..... 4  
4. Support Operation system..... 6

# 1. General Specifications

Item	Contents	Remark
Mode Name	CT409U-1371	
Version	V2.0	
IC	ILI2510	ILI
VID PID	VID_ 0X222A /PID_ 0X01	
Interface	USB	
Number of touch point	1-10	
Report Rate	100-125HZ	
Response time	8-10ms	
Support Size	≤21.5	Inch
Accuracy	±2mm(Center)	
Power Supply	5.0± 0.5V	DC
Power consumption	≤200mA (Working ) ≤150mA (Standby)	
Outline Dimensions	75.0(L)x30.0(W)±0.5mm	
Operating	-20°C~+70°C, ≤90%RH	
Storage	-20°C~+80°C, ≤90%RH	
ESD	IEC61000-4-2, Contact 4KV, Air 8KV	TM test
EMI	EN 55022,CLASS B	
EMS	IEC61000-4-6	
Compliance	ROHS / UL	

## 2. Electrical specifications

Item	Contents	Remark
Power Supply	4.4V-5.5V, 5V (Typ.)	DC
Current	≤200mA(Working ) ≤150mA(Standby)	
Power consumption	≤1000mW(Working ) ≤500mW(Standby)	
Interface	USB	
Number of touch point	1-10	
Report Rate	100-125HZ	
Response time	8-10ms	
ESD	IEC61000-4-2, Contact 4KV, Air 8KV	TM test
EMI	EN 55022, CLASS B	
EMS	IEC61000-4-6	

## 3. Mechanical specifications

### 3.1、 General

Outline Dimensions	75.0(L)x30.0(W)±0.5mm	
FPC	61PIN*71PIN	pitch0.3
Interface	USB	
IC	BGA	

### 3.2、 Connector pin define

J1& J2:

J1 No	J1 Define	J2 No	J2 Define
2-40	TX1-TX39	1/61	NET1
43/61	NC	2-60	RX1-RX59
1/41/42	NET1	62-71	NC

CON1:

NO.	define
1	D-
2	D+
3	GND
4	VCC
5	GND

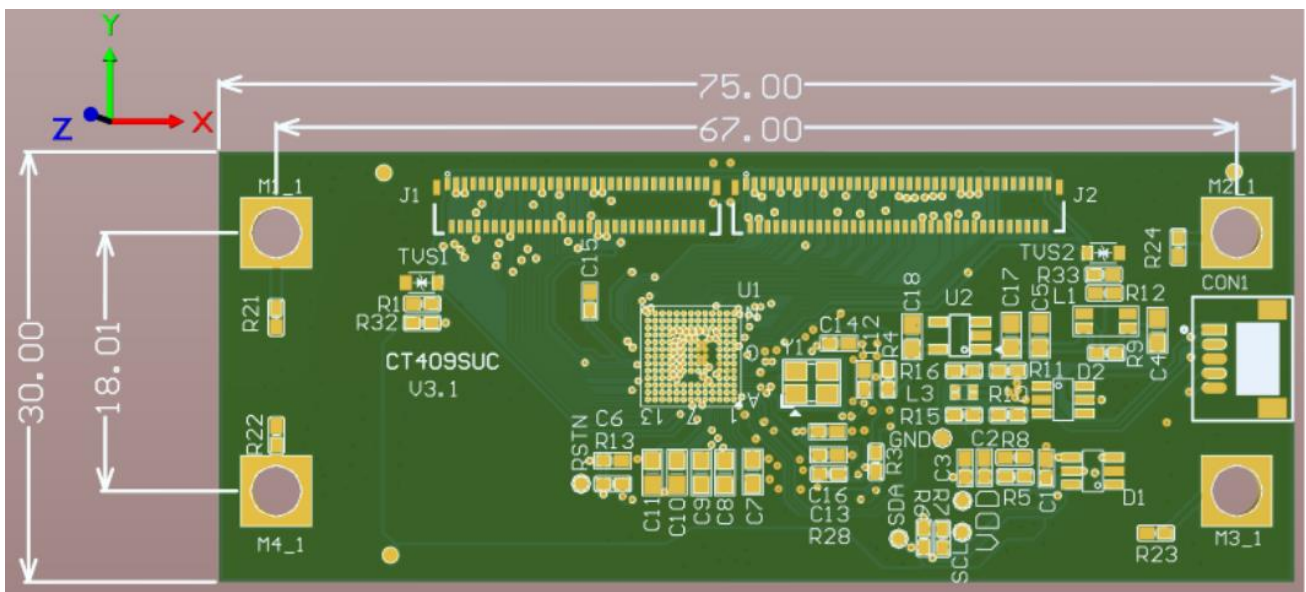
CON2:

NO.	define
1	GND
2	GND
3	SDA
4	SCL
5	VDD
6	INT
7	NC
8	REST

CON3:

NO.	define
1	VCC
2	GND
3	RX
4	TX

### 3、 Drawing



## 4.Support Operation system

OS	Version	Interface
Windows	Windows 10 Windows 8 Windows 7 Windows XP	USB
Linux	Kernel $\geq$ 3.5	USB
Android	USB	