

GT OML325 32" LED-Framed Monitor

GT 5-series LED-Framed Monitor is available in 23.8", 27", 32" display sizes. Vivid colors, and eye-catching front addressable LED illumination to keep exciting players immersed with captivating play. It is designed specifically for the rigors of gaming environments such as the casino, gaming, and amusement industry.



Features & Benefits

- LED-Framed, front 2 LED lights bar, back 3 LED lights bar
- High-quality PCB-mounted LEDs, no dark corners
- Independent LED lights bar interface for multi screen combination
- True-flat, aluminum middle frame edging
- Black closed-frame designs



Left
In/Out

Middle
In/Out

Right
In/Out



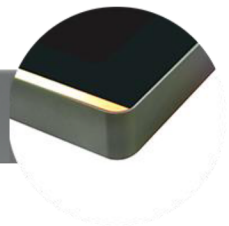
DVI

DP

VGA

Power
DC 24V

LED Lights
Model: C2521HF-3P



Applications

- Gaming
- SLOT
- Casino

SPECIFICATIONS

Name	32 Inch LED Lights Bar Closed Frame Monitor
Model	OML325
LCD Panel Parameters	
Display Technology	Active Matrix TFT-LCD with LED Backlight
Aspect Ratio	16:9
Active Area (W x H)	698.40×392.85mm
Native Resolution	1920×1080@60Hz
Response Time (Typ.)	8ms
Display Colors	16.7M
Luminance (Typ.)	400nits
Contrast Ratio (Typ.)	1200:1
Viewing Angle (Typ.)	Horizontal (left/right) CR≥10 89°/89°
	Vertical (up/down) CR≥10 89°/89°
Screen Parameters	
Surface Treatment	Tempered or Chemically Strengthened
	Optional: Anti-Glare
Cover glass thickness	3.0
Light Transmission	≥90%
Overall Parameters	
Case/Bezel Color	Champagne gold
Mounting Options	VESA: 100mm×100 mm, 450mm×150 mm
Outline Dimensions (W×H×D)	769.3mm × 469.9mm× 61.8mm
Power Supply	Monitor: Input Voltage Range: +24VDC ± 5%
	RGB LED Lights: +12VDC ± 5%
	Optional LED controller(External): +12VDC ± 5%
On Screen Display (OSD)	Control (back): Power, Auto, Up, Down, Menu
Power Consumption (Max.)	60W (Monitor without RGB LED Lights)
	15W (RGB LED Lights)
Operating Altitude	≤3000m

Temperature Range	Operating: 0°C to 40°C, storage: -20°C to 60°C
Humidity (Non Condensing)	Operating: 20% to 80%, storage: 10% to 90%
I/O	VGA, DVI, DP
Accessories	Optional
Carton Box Dimensions (1 unit in one carton)	905mm (L) × 215mm (W) × 580mm (H)
Weight	Net: 17kg Gross: 24kg
MTBF	50,000 hours demonstrated
LED Lights Color	Multicolor
LED Lights Location	Front: 2 LED lights bar, Back: 3 LED lights bar
LED Controller(remote)	Optional
Agency Approvals	CE , FCC
Warranty	3 years

Ordering Information		
Model	Part Number	Description
OML325-R03000-0P4F20-1.0	110303409R	32", 16:9, 400nits, non-touch, VGA/DVI/DP, LED lights Location front & back

Optional Accessories		
Model	Part Number	Description
VGA Cable	130300697R	VGA Cable, 1500mm
DVI Cable	130300720R	DVI Cable, 1500mm
DP Cable	130300932R	DP Cable, 1500mm
LED Controller Kit	TBD	LED Controller Kit, 50W
Adaptor	130104171R	G99-KEP150M-N001 Input:100-240V(VAC)- Output :24(VDC)-6.25A-150W-DC 4PIN
Power Cable		1500mm

Go to www.generaltouch.com for more products and information, or contact us.

General Touch Co., Ltd. reserves the right to change or update, without notice, any information contained herein; to change , without notice, the design, construction, materials, processing or specifications of any products; and to discontinue or limit production or distribution of any products.

Tel: 0086-28-85124120

Fax: 0086-28-85124115

E-mail: info@generaltouch.com

<http://www.generaltouch.com>